



PRECIDIA
TECHNOLOGIES

Cell232Plus

Cell232Plus



**Transmit serial data
over a wireless network**

Precidia Technologies has developed an innovative product that connects any stand-alone asynchronous RS232, RS422 or RS485 serial device to a wireless IP network.

Unlike current land line based solutions for remote connectivity, the Cell232Plus does not require an existing infrastructure. Simply connect the serial equipment to the Cell232Plus, and to a wireless digital handset or radio transceiver, using a standard data cable, and you are ready to go. The data is sent over a wireless network. You now have a wireless Virtual Private Network (VPN), without changing your existing serial equipment.

Cell232Plus is the ideal product to cost effectively extend existing networks to stand-alone serial equipment, providing real-time information.

Cell232Plus provides several benefits over traditional modem solutions:

- Delivers real-time information;
- Costs a fraction of other alternatives;
- Makes data available from anywhere in the world;
- Protects your investment in existing equipment;
- Provides web based monitoring and management capabilities;
- Resolves potential service issues using customizable SNMP alerts;
- Fits easily into any location due to its compact size.

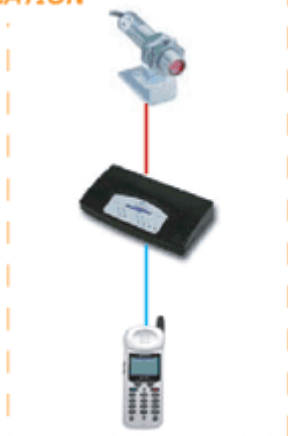


**Remote Access
via wireless connection**

www.precidia.com

REMOTE LOCATION

Remote sensor
Serial cable
Cell232Plus
Standard Cellular Data Cable
Wireless Phone

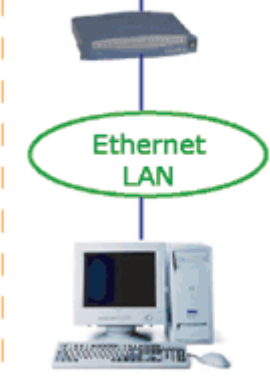


Gateway Router



HEAD OFFICE

Router
Ethernet LAN
Application Server



Features

- Transparent to existing serial connections
- Serial data conversion to IP via PPP
- Several data formatting and session mode options
- Drives PPP connection to IP network
- Compatible with TCP/IP networks for Internet or Intranet applications
- Modem emulation capability
- Built-in web page server for displaying both static and dynamic web pages
- Statistics and log files available via Web browser or Telnet session
- Routing redundancy in case of application server failure
- Auto-identity header
- Works with Com Port Redirection
- SNMP support for third party network management
- Supports hardware/software/no handshaking
- Real-time access to data for troubleshooting and diagnosing problems
- Local and remote configuration and software upgrade capability
- Local and remote password protection
- Remote logging of wireless network signal strength (currently available for iDEN cellular network)
- Visual status LEDs
- One year warranty

Specifications

- Legacy Serial Interface: RS232 DTE Interface or RS485 (4 wire) / RS422 - cable selectable
- Legacy Serial Connector: DB-9 Male
- Legacy Serial Speed: 300-38400 bps
- (PPP) Serial Interface: RS-232 DTE Interface
- (PPP) Serial Connector: DB-9 Male
- (PPP) Serial Speed: 300-38400 bps
- Status LEDs Indicators: Power, PPP Serial (transmit, receive, DCD), Dial-In (transmit, receive, status)
- Protocol Supported: PPP (CHAP, PAP authentication methods), IP, UDP, TCP, ICMP
- Configuration: PPP set-up, multi-host protocol, remote logging
- Network Services: Telnet, SNMPv2C, HTTP, TFTP, DHCP, Com Port Control (RFC2217), IPSec (manually keyed)
- Power requirements: 9V DC external, 500mA
- Operating Temperature: 0-50°C / 32-125°F
- Dimensions (h x w x d): 28 x 155 x 80 mm (1.1 x 6.0 x 3.1 in.)
- Weight (including power supply): 500 g (17.14 oz)



PRECIDIA
TECHNOLOGIES

Cell232Plus

10A Hearst Way
OTTAWA, Ontario
Canada K2L 2P4
Tel : (613) 592-7557
Fax: (613) 592-0944
Email : info@precidia.com

Precidia Technologies Inc. is a global leader in the design and manufacture of IP access devices for a wide range of industries, including retail payments and building automation. With customers in over 45 countries, Precidia's unique product line of wired and wireless access devices as well as chip technology seamlessly migrates stand-alone serial equipment onto more sophisticated IP networks.

www.precidia.com