



**PRECIDIA**  
TECHNOLOGIES

EtherSDLC

# EtherSDLC™



## IP Savings for Hypercom SDLC LANs

Reduce costs and add functionality to your existing Hypercom LAN terminals by connecting them to your IP network

Introducing the EtherSDLC, a product designed to connect existing Hypercom retail payment terminals currently operating on a proprietary SDLC (Synchronous Data Link Control) network to an IP LAN/WAN. The EtherSDLC helps multi-lane merchants seamlessly migrate these terminals onto a newer, faster and more cost effective IP network, eliminating the costs associated with running duplicate networks and operating a dedicated leased line for transaction processing.

The EtherSDLC is the ideal solution for multi-lane merchants such as grocery stores and quick service retail, who are currently using Hypercom payment terminals on a proprietary SDLC LAN. The EtherSDLC provides the bridge between the RS485-based SDLC LAN, and an Ethernet LAN, converting the protocol smoothly, ensuring reliable, efficient transaction processing. Leveraging the Ethernet LAN, merchants will benefit from faster transactions, value added features such as data logging and device statistics, and, most importantly, a reduction in cost as an additional dial line is eliminated.

The EtherSDLC ensures continued transaction processing reliability, helping to maintain and enhance the merchant's customer service offering.

The product requires no replacement or upgrade of existing payment systems, and installs easily. To further simplify the merchant's operations, the EtherSDLC is transparent both to the user and to existing applications, meaning no staff training is required to implement this solution.

EtherSDLC features numerous benefits for merchants and processors including:

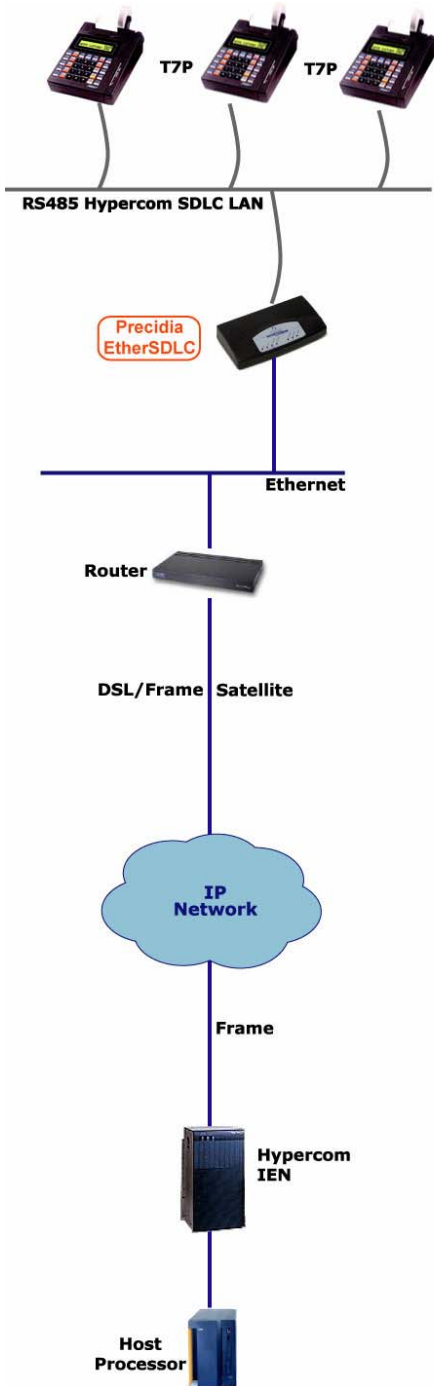
- Reduce communication costs by eliminating duplicate networks
- Seamless to existing systems and equipment (no training or application changes required)
- Retain investment in legacy equipment
- Install quickly and easily
- Gain access in real-time to device/transaction statistics

With the EtherSDLC, retailers, transaction processors, ISOs, and service providers can lower their costs and increase functionality without replacing existing POS equipment. The ideal product in today's competitive environment, the EtherSDLC enhances functionality and lowers overall costs.



Empower your **Business**  
with  
**IP Enabling**  
**Technologies**

[WWW.PRECIDIA.COM](http://WWW.PRECIDIA.COM)



## Features

- Hypercom SDLC LAN conversion to IP over Ethernet
- Compatible with TCP/IP networks for Internet or Intranet applications
- Supports numerous protocols including Visa 1/2, ISO 8583 and PassThrough
- Routing redundancy in case of host failure
- Accept static or dynamically assigned IP addresses
- Supports IPsec (manually keyed)
- Transaction Statistics are available via a Web browser or a Telnet session
- Status LEDs
- One year warranty
- Local and remote configuration and software upgrade capability
- Local and remote password protection

## Specifications

- SDLC Interface: RS-485, 2-Wire
- SDLC Connector: RJ12 half duplex
- SDLC Speed: 300 – 19200 bps
- Ethernet Interface: Ethernet II, IEEE 802.3, 10Base-T
- Ethernet Connector: RJ-45
- Ethernet Speed: 10 Mbps
- Status LEDs Indicators: Power, Ethernet (link, collision, transmit), Dial (transmit, status, carrier)
- Protocol Supported: ARP, ICMP, IP, UDP, TCP
- Configuration: IP, subnet mask, router, multihost protocol
- Power requirements: 9V DC external, 500mA
- Operating Temperature: 0-50°C / 32-125°F
- Network Services: Telnet, SNMPv2C, HTTP, TFTP, DHCP, IPsec (manually keyed)
- Dimensions (h x w x d): 28 x 155 x 80 mm (1.1 x 6.0 x 3.1 in.)
- Weight (including power supply): 500 g (17.14 oz)

### Contact Precidia:

10A Hearst Way  
 Ottawa, ON Canada K2L 2P4  
 Tel: (613) 592-7557  
 Fax: (613) 482-5770  
 Email: info@precidia.com

**EtherSDLC™**

[WWW.PRECIDIA.COM](http://WWW.PRECIDIA.COM)