

Using HyperTerminal

Help Guide

HyperTerminal is terminal software that comes standard with every PC running Windows 95 or higher. You can use HyperTerminal to configure the Precidia unit through the serial port on your PC.

IMPORTANT! WINDOWS NT/2000/XP USERS:

If using HyperTerminal to perform firmware upgrades, or to download static Web pages to the Precidia unit, you need to use the latest version of HyperTerminal. To obtain your free HyperTerminal upgrade, visit <http://www.hilgraeve.com>.

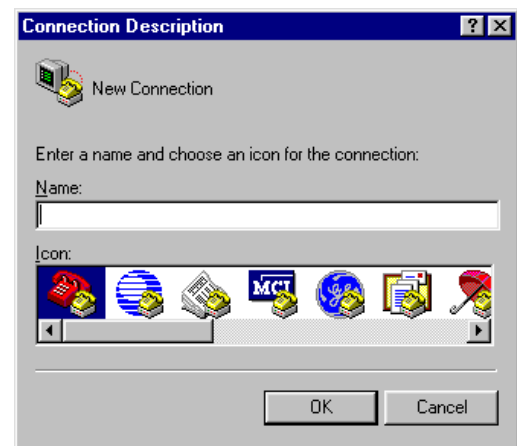
Setting up the Initial Connection

- 1 From the **Start** menu, go to **Programs>Accessories>Communications>HyperTerminal**.

The HyperTerminal folder opens.

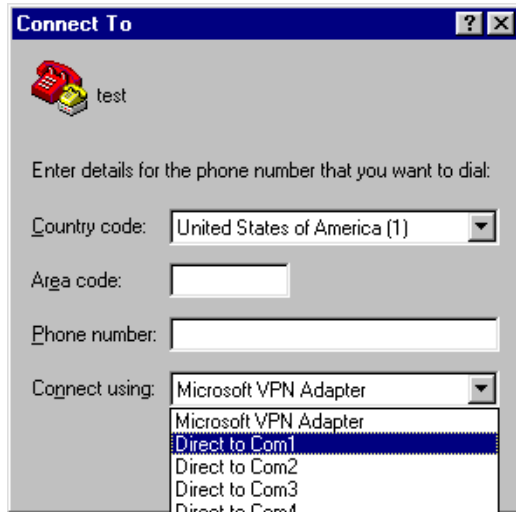
- 2 Double-click the **HYPERTRM.EXE** icon.

The Connection Description dialog box appears.



- 3 Type a name for the connection (unit name or ID) in the Name field, choose an icon, and click **OK**.

The Connect To dialog box appears.



- 4 Select **Direct to COM n** from the Connect Using drop down menu (depending on which COM port you are using) and click **OK**.

The COM n Properties dialog box appears.

- 5 Configure the COM Properties with the following settings:

- Bits per second: **9600**
- Data bits: **8**
- Parity: **None**
- Stop bits: **1**
- Flow control: **Hardware**

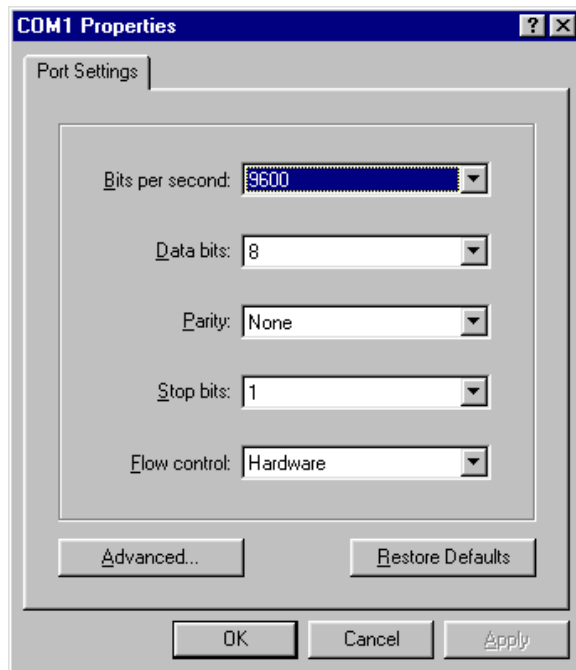
- 6 Click **OK**.

The HyperTerminal window appears.

- 7 From the File menu, select **Save**.

This will save your settings for next time under the name and icon you chose.

- 8 Press and hold the CONFIGURE button on the Precidia unit to access the Configuration screen and proceed with configuring the unit.



Connecting after the Initial Set-Up

If you have already set up a connection icon, as described above, you can quickly connect again.

- 1** From the **Start menu**, go to **Programs>Accessories>Communications>HyperTerminal**.

The HyperTerminal folder opens.

- 2** Double-click the icon with the name you created during the initial set-up.

The HyperTerminal window appears.

- 3** Press the **CONFIGURE** button on the Precidia unit to access the Configuration screen and proceed with configuring the unit.

