

# Connecting with Telnet

## Help Guide

Before you can access and reconfigure Precidia products remotely, you must configure the following settings locally:

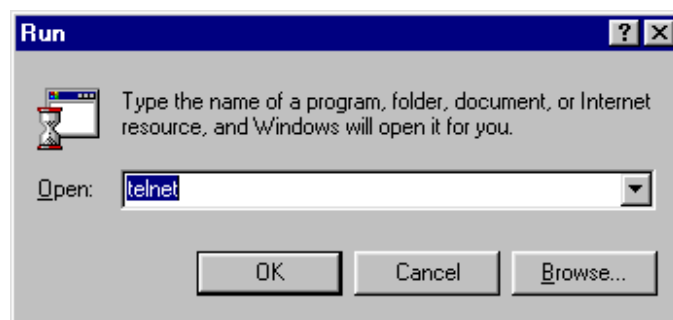
- the IP Address and Subnet Mask (or automatically with DHCP)
- the Gateway address if necessary (or automatically with DHCP)
- the Remote Password

Refer to the Quick Install Guide or User Guide for more information on configuring these settings.

To connect to the Precidia unit remotely using Telnet:

- 1** From the **Start menu**, select **Run...**

The Run window appears.

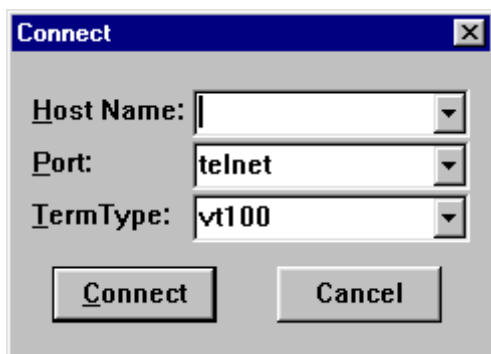


- 2** Type **telnet** in the Open field and click **OK**.

The Telnet application window appears.

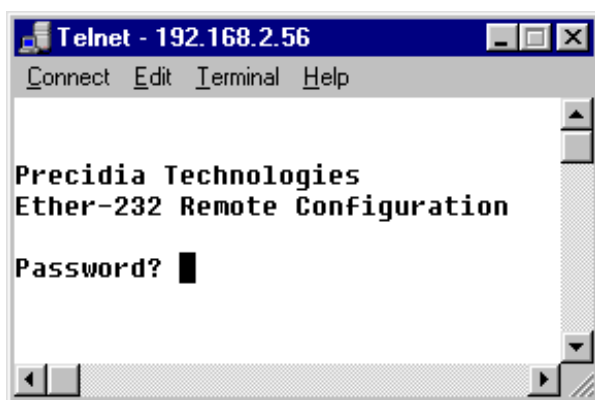
- From the **Connect** menu, chose **Remote Systems...**

The Connect window appears.



- Type the **IP address** of the unit in the Host Name field, and choose **Telnet** in the Port field.
- Click **Connect**.

You are prompted to enter your password in the Telnet window.



- Type the **Remote Password** you created during local configuration, and press **Enter**.

The Configuration screen appears in the Telnet window.

If you typed an invalid password, the connection to the host will be dropped. Ensure you have the correct IP address and Remote Password, and go back to Step 3.

---

**NOTE:** *The Remote Password is case sensitive.*

---