



MerchantVu

Advanced Payment Data for Merchants

Do you have the data you need to easily resolve reconciliation issues with processors and customers? Are you losing revenue to inconsistent settlements across locations? Does your system show you how quickly the network and host are responding to credit transaction requests? MerchantVu is a web-based payment analysis tool that is designed to deliver a single view of payments across one store or an entire chain from a standard web browser. This user-friendly interface is customized to the needs of merchants, while the NetVu management server offers data to the support organizations that assist them. Together, this suite delivers powerful tools that save time and money for merchants.

MerchantVu delivers several key features and benefits to merchants:

Enhances Efficiency of Store Operations

- transaction data for multiple stores is consolidated into one convenient place for easy access by the merchant
- settlement data available 24/7 and updated every 5-30 minutes simplifies 'end of shift' procedures for staff
- eliminate daily reconciliation errors and settle payment transaction centrally for all locations
- unsettled batch data summary helps quickly identify issues
- search archived transactions – search by card type, card number (last 4 digits only), date

Improves decision-making to deliver better customer service

- identify business trends; revenue; credit/debit; reconcile to cash
- minimize revenue losses due to inconsistent settlements across locations
- detect revenue spikes that might indicate unusual transactions
- identify and address potential payment issues across all stores before they become costly

Simplifies Problem Identification to Reduce Support Costs

- MerchantVu's data can help the merchant react to network, host or settlement problems quickly
- root of problem can often be pinpointed before contacting help desks for various providers
- availability of data can eliminate need for onsite support visits, reducing costs
- disputed transactions can be easily resolved with archived data

Provides User-Customizable Data Display

- Data on number and volume of transactions can be displayed in summary or graphical format, by location, region, processor or card type
- Data can be exported to spreadsheet for even greater manipulation,
- Merchant and ISO/Partner logos can be displayed on screen

Ensures Cardholder Data Security

- Web-based portal does not require any compliance or validation by standards organizations as no cardholder data is stored on server, only truncated card numbers for data management purposes

Available Data:

- **Batch summary by processor**
- **Unsettled batch summary**
- **Transaction completion time**
- **All transactions searchable by card type, card number (last 4 digits), date**
- **Settlement data by location, region, processor, card type**

MerchantVu's data can be displayed graphically as selected by the user. The following charts are an example of the charts available to the merchant.

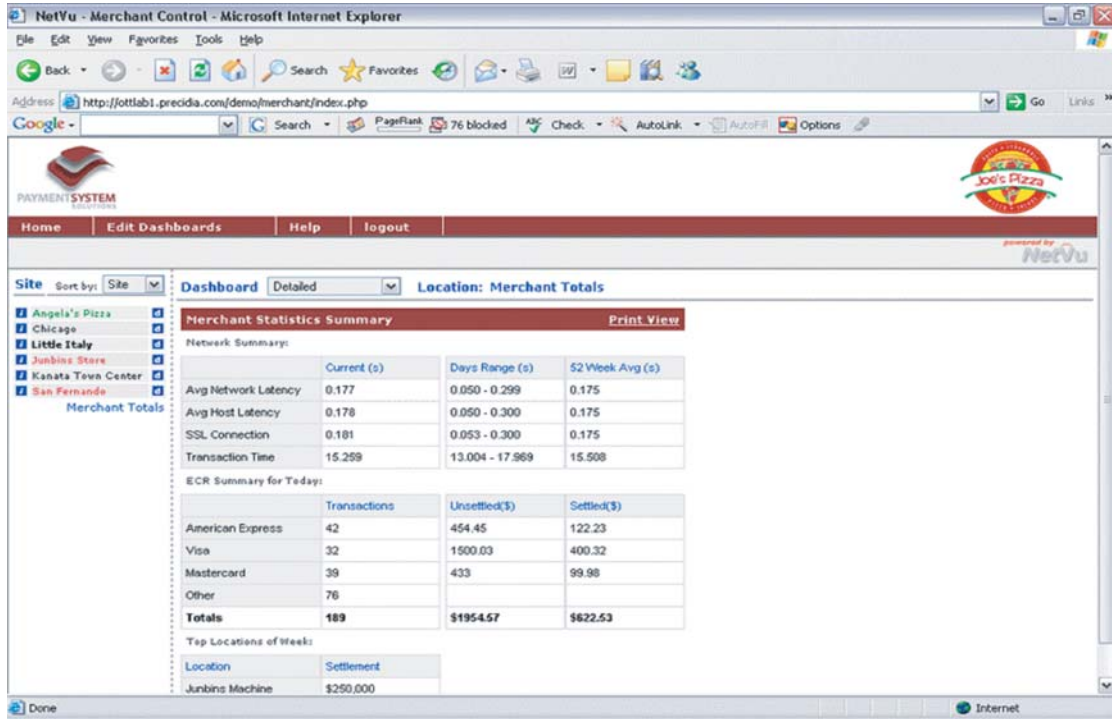


Figure 1. Merchant Summary View

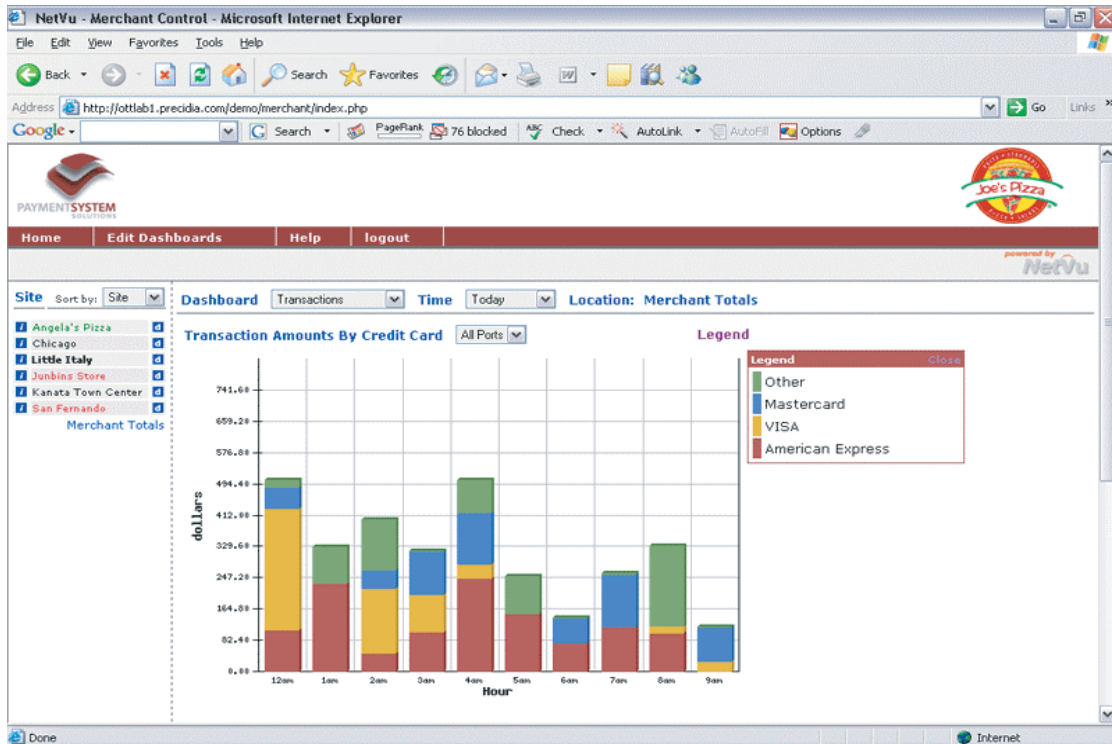


Figure 2. Transaction Amounts by Credit Card Type

Find out more information:

Precidia Technologies
 Tel: 1-877-998-2747 x.300
info@precidia.com